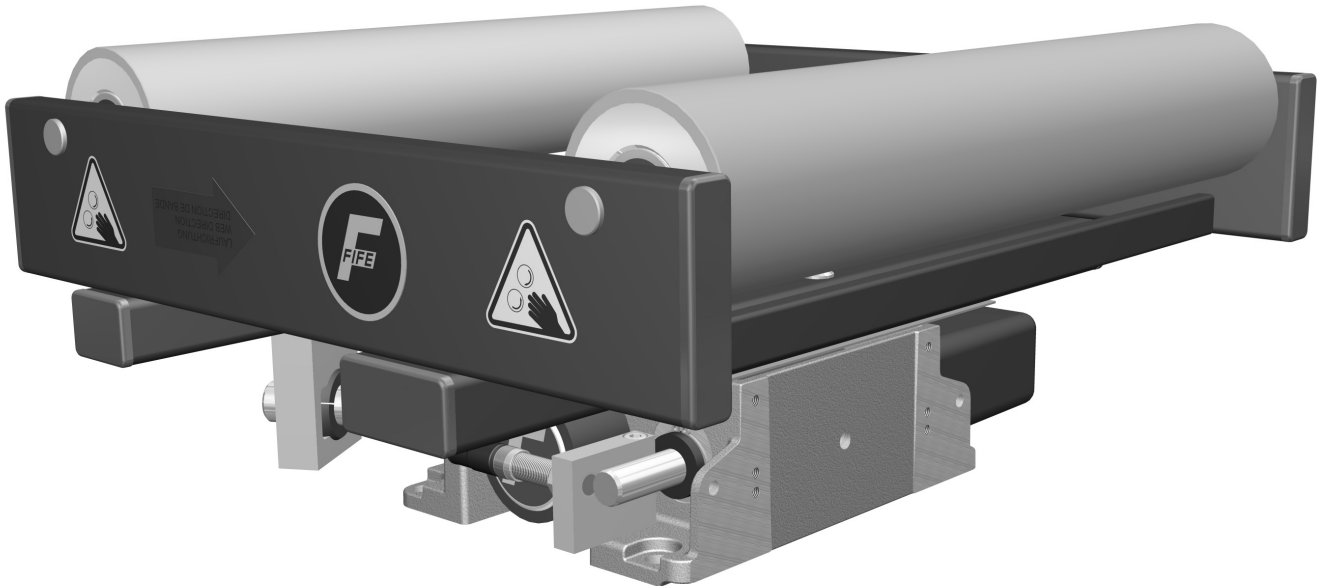


MAXCESS

MAGPOWR



TIDLAND



The Fife-Symat 70G is a compact web guiding system, that allows for correction of the web position with minimal entry and exit spans.

Thanks to its modular design, the Fife-Symat 70G can be easily configured to meet the requirements of your application. By using different roller lengths, diameters and spacings as well as different Fife components, each customer-specific request in the frame of the technical specification is realizable with the Fife-Symat 70G.

Sensor support bars, idler rollers and sensor positioning equipment can be delivered fully integrated or retrofitted at a later time to cover all installation options.

GENERAL SPECIFICATIONS

Tension:
max. 800 N

Correction speed:
approx. 50 mm/s

Correction:
from ± 20 mm to ± 45 mm

Roller length F:
from 250 to 700 mm

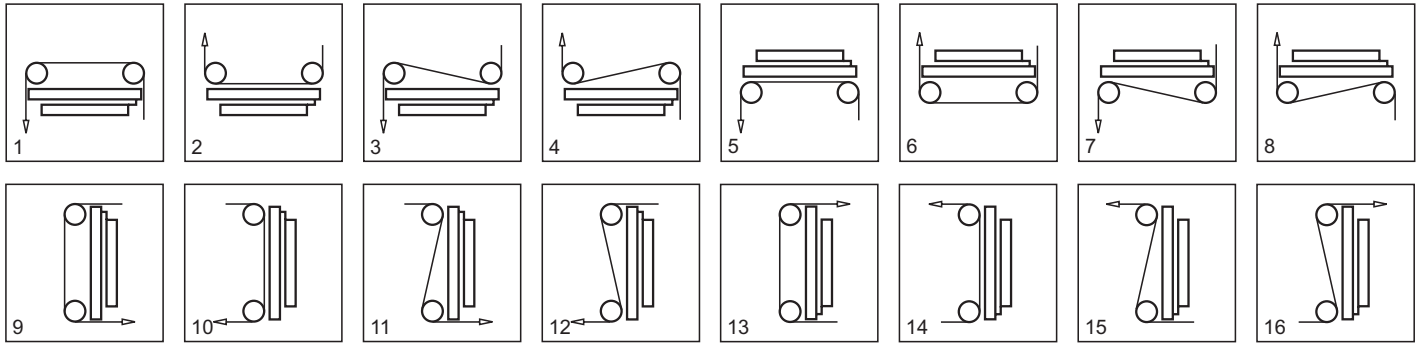
Roller diameter D:
50, 80, 100 mm

Correction length L:
from 250 to 600 mm

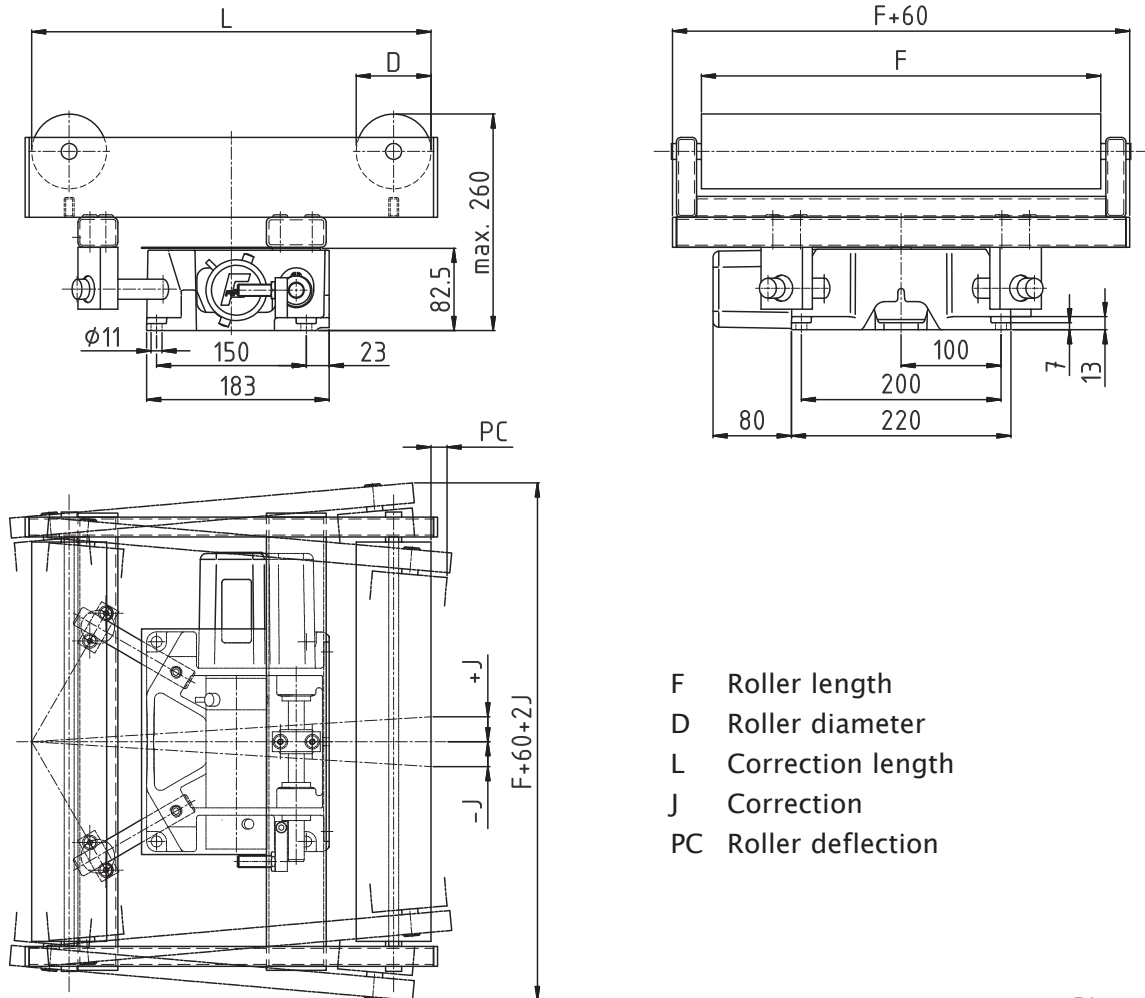
KEY FEATURES

- Highly accurate due to backlash free design and highest dynamic response
- Compact and robust construction
- Wide range of accessories, such as integrated splicing table, mounting brackets, motorized and automatic sensor positioners
- Compatible with all Fife guiding controllers and sensors

WRAP STYLES



DIMENSIONS



Dimensions in mm.



EUROPE, MIDDLE EAST AND AFRICA

Tel +49.6195.7002.0
 Fax +49.6195.7002.933
 sales@maxcess.eu
 www.maxcess.eu

INDIA

Tel +91.22.27602633
 Fax +91.22.27602634
 india@maxcessintl.com
 www.maxcess.in

NORTH, CENTRAL AND SOUTH AMERICA

Tel +1.405.755.1600
 Fax +1.405.755.8425
 sales@maxcessintl.com
 www.maxcessintl.com

JAPAN

Tel +81.43.421.1622
 Fax +81.43.421.2895
 japan@maxcessintl.com
 www.maxcess.jp

CHINA

Tel +86.756.881.9398
 Fax +86.756.881.9393
 info@maxcessintl.com.cn
 www.maxcessintl.com.cn

KOREA, TAIWAN AND SE ASIA

Tel +65.9620.3883
 Fax +65.6235.4818
 asia@maxcessintl.com