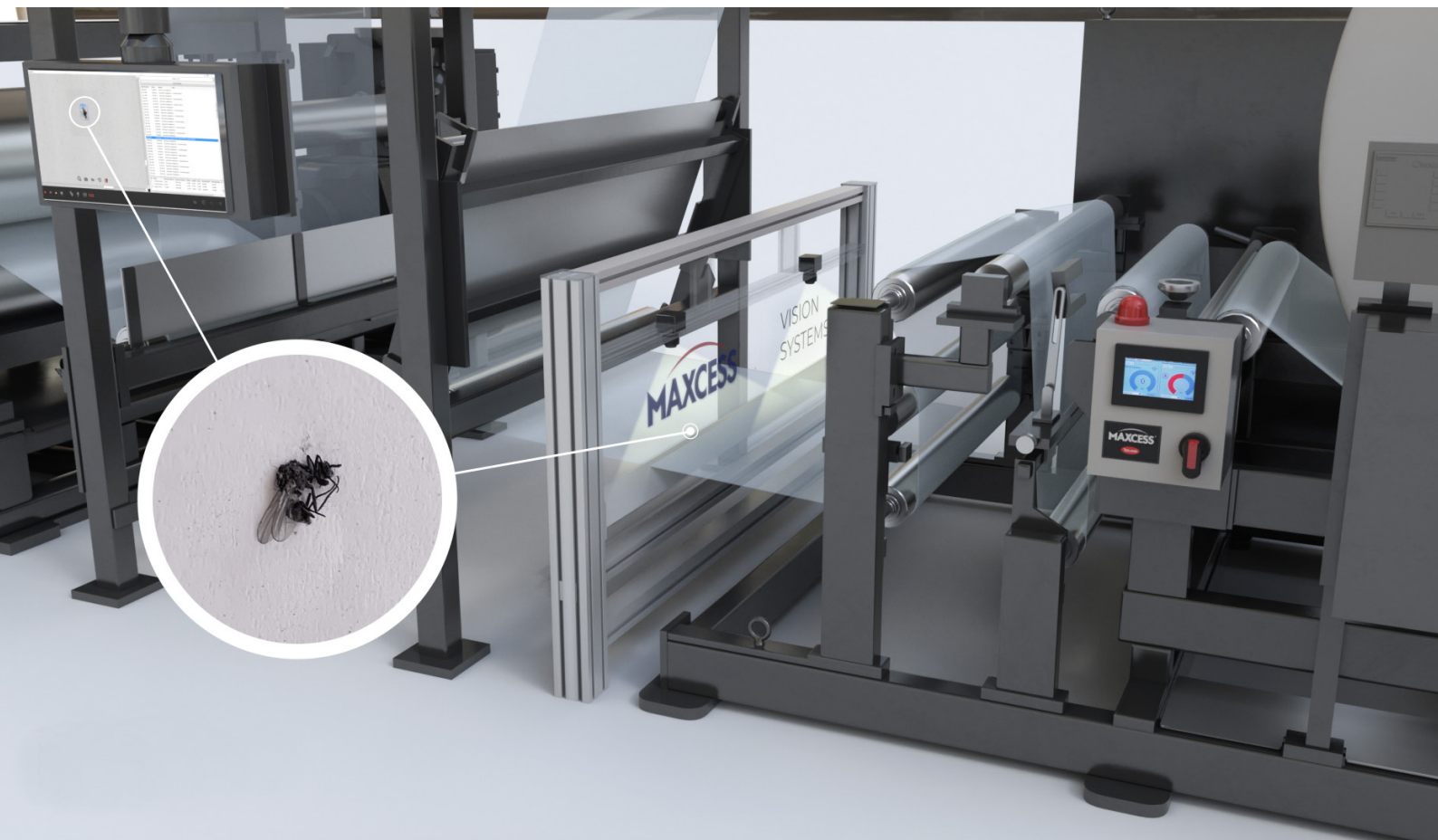


**MAXCESS**<sup>®</sup>

VISION  
SYSTEMS

END-TO-END 100% VISION SOLUTIONS FOR WIDE WEB



**ENVISION LESS SCRAP  
ENVISION NO RETURNS OR REWORK  
ENVISION MAXCESS VISION**

Let us solve your challenge

# THE VISIONMAX ADVANTAGE

**New 100% Vision Systems from Maxcess help your converting line run better, faster and smarter**

**Better** - no more returns and rework

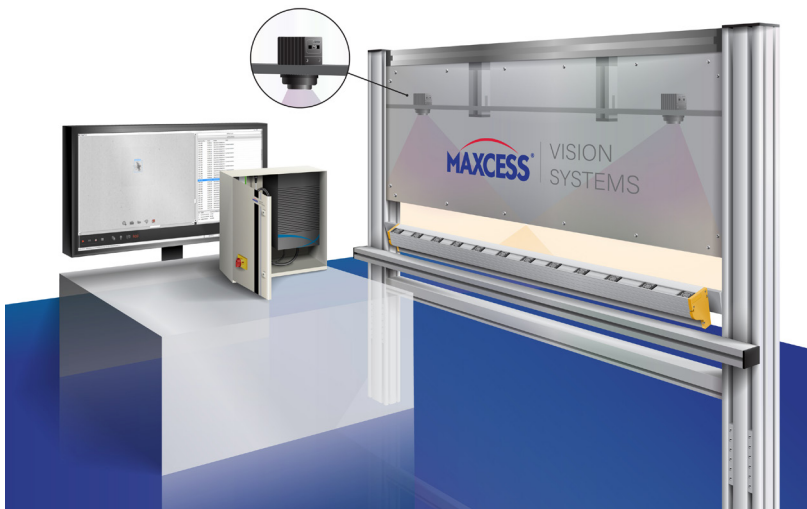
**Faster** - reduce downtime and waste

**Smarter** - run faster while improving productivity through automated smart-converting

Delivering quality end products while reducing downtime and scrap is critical for your wide web converting application. For decades, Maxcess has pioneered the industry with cutting-edge end-to-end solutions that let your converting line run at peak output performance, with a **global team** of experts helping you run better, faster and smarter.

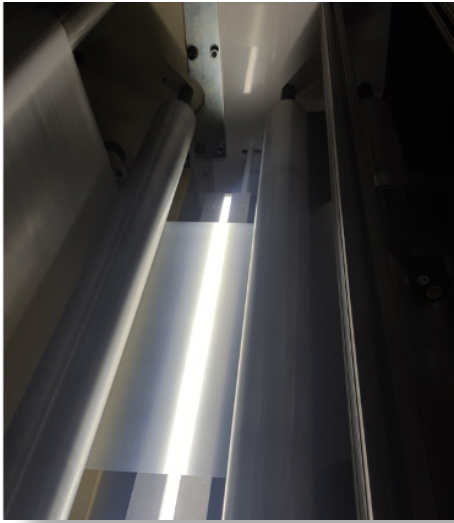
Our global team delivers more than responsive, convenient service and support for your inspection investment. It also means vertical integration with local manufacturing and service locations throughout North America, South America, Europe, India and Asia Pacific. This allows us to offer unrivaled value worldwide, with the ability for you to have local contact with Maxcess no matter where you are. With a combined 400 years of knowledge between our brands of **RotoMetrics, Fife, Tidland, MAGPOWR, Webex, Valley Roller and Componex**, nobody can match our expertise in web handling applications, installation, innovation or customization.

At the heart of our 100% inspection solution is **VisionMAX**, our proprietary software and high-end industrial PC in an IP-rated enclosure that offers **unrivaled price performance**. While the competition requires a separate inspection system for each converting application, we use **one open system** that can be applied on all lines, saving you time and money. A complete solution paired with our advanced cameras, sophisticated lighting package and high-resolution touchscreen OI, our **VisionMax** line allows an operator to be up and running quickly, detecting critical defects in real-time before they **become a costly problem**.



# INSPECT PAPER, FILM AND FOIL

## SUBSTRATE INSPECTION



## COMMON DEFECTS

Wrinkles  
Carbons  
Gels  
Water Stains  
Fish Eyes  
Splices  
Holes  
Foreign Matter  
Scratches  
Insects  
Contamination  
Die Lines

## BENEFITS

**VisionMax** will locate all defects and identify their exact position, taking a snapshot of the defect and alerting the operator in real-time. With **VisionMax**, you can:

- Inspect while extruding, providing real-time feedback on gel density and black spec contamination
- Inspect while unwinding, preventing holes, dents, edge cracks and splices, which disrupt your process
- Use our inspection system to guarantee your business by shipping product with zero defects

**FIND DEFECTS BEFORE  
THEY BECOME CRITICAL  
AND COSTLY**

### DARK GELS



### STAINS



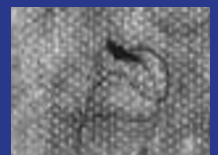
### HOLES



### INSECTS



### FOREIGN MATTER



# INSPECT COATINGS OR LAMINATES



## COMMON DEFECTS

- Voids
- Excess Glue
- Die Lines
- Coating Register
- Foreign Matter
- Substrate Defects
- Wrinkles
- Holes
- Bubbles
- Delamination

## BENEFITS

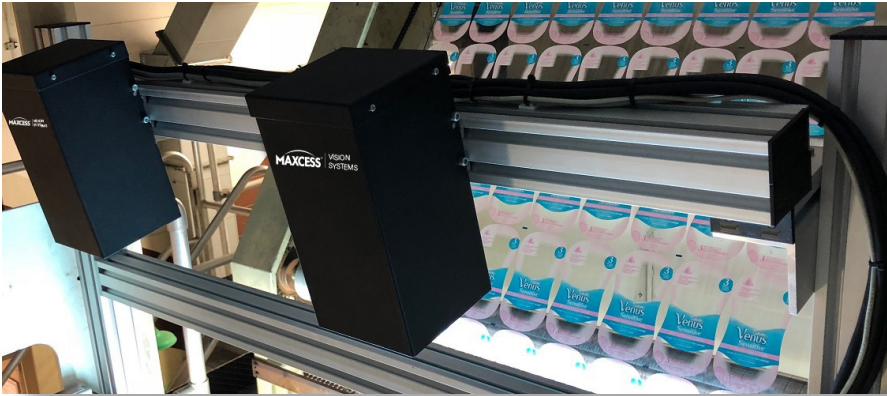
**VisionMax** can inspect film, paper and foil laminate (printed or plain). Inspect coatings, varnish or adhesives for presence and foreign matter. Take advantage of our unique sensors and illumination solutions to:

- Detect adhesive, primer or clear coating voids on paper, film and foil. Remove safety hazards where operators need to touch to confirm presence
- Find lamination defects in-line where it is possible to reduce waste and avoid landfill
- Inspect complex structures such as nonwovens and composites using advanced sensors and deep learning algorithms





# INSPECT PRINT



## COMMON DEFECTS

- Splashes
- Missing print
- Plate Issues
- Roller Marks
- Hazing
- Streaks
- Bleeding
- Substrate issues
- Mis-register
- Color Variations

## BENEFITS

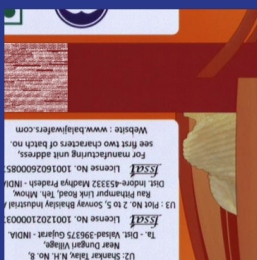
**VisionMax** inspects on printing presses using high-resolution color cameras that enable consistent quality for repeating jobs, alerting the operator in real-time of any process issues that will cause returns. With **VisionMax** you can:

- Use operator assist and color measurement on startup to reduce make-ready and reduce waste
- Detect repeating defects such as roller marks, missing print, hazing or streaks while reducing in-line waste
- Apply consistent standards on copy and color, avoiding customer returns and rework
- Run your presses faster and reduce requirement to over print by measuring output against orders



## NO MORE RETURNS AND REWORK

### COLOR



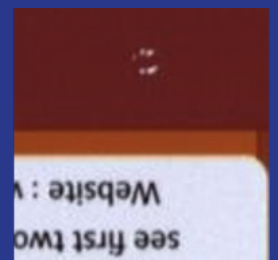
### STREAKS



### DRAGS



### ROLLER MARKS



# SMART CONVERTING MADE EASY

## VISIONCONNECT ON YOUR PROCESS LINE

100% is only the beginning. With our proprietary **VisionConnect** workflow automation tools, we give you the power to harness your data to run smarter. **VisionConnect** applied on your process line can be used to:

- Insert tags or print unique identifiers on trim to identify position for resynchronizing in subsequent processes
- Track roll events such as splice or knife cuts, and other key process events
- Import inspection data and match to serialized roll maps to enable automated waste removal
- Operators can define roll events and attach electronic commentary to record key manufacturing intelligence that can be used for troubleshooting and smart converting



## VISIONCONNECT ON YOUR SLITTER

When installed on a slitter, **VisionConnect** can be used to optimize yield and automate waste removal. Improve productivity on slitters by reducing time spent doctoring, while making sure no marked defects get shipped to customers.

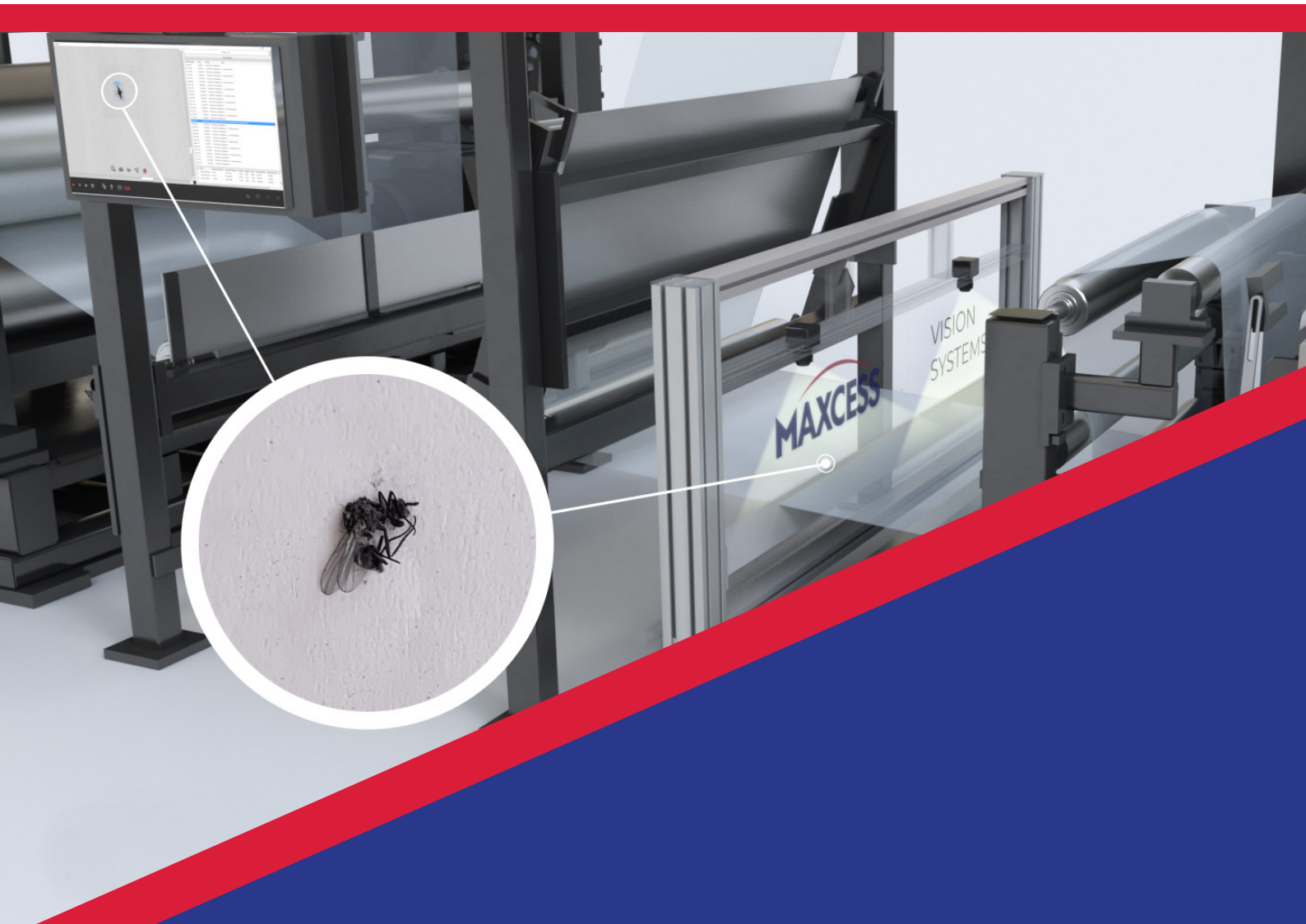
**VisionConnect** on your slitter includes the following capabilities:

- Edit roll and add cut commands based on customer contract so operators have clear instructions on how to manage rolls for resynchronizing in subsequent processes
- Automatically control rewind/slitter to stop using standard controls so your machine can run at top speeds
- Use global IDs to automatically load roll data and resynchronize after splicing, with online or hand scanners
- Provide operators with simple, easy-to-use interface, including defect images and graphical feedback on location, current and target



# WORK BETTER, FASTER AND SMARTER TODAY

1. Maxcess Vision Systems are reliable and built to last
2. Your purchase is backed by our global service and support, 365 days a year
3. Maxcess Vision Systems are designed for your exact process
4. Operators can be up-and-running quickly, with an easy-to-use interface
5. Get all the features you need, don't pay for the features you don't

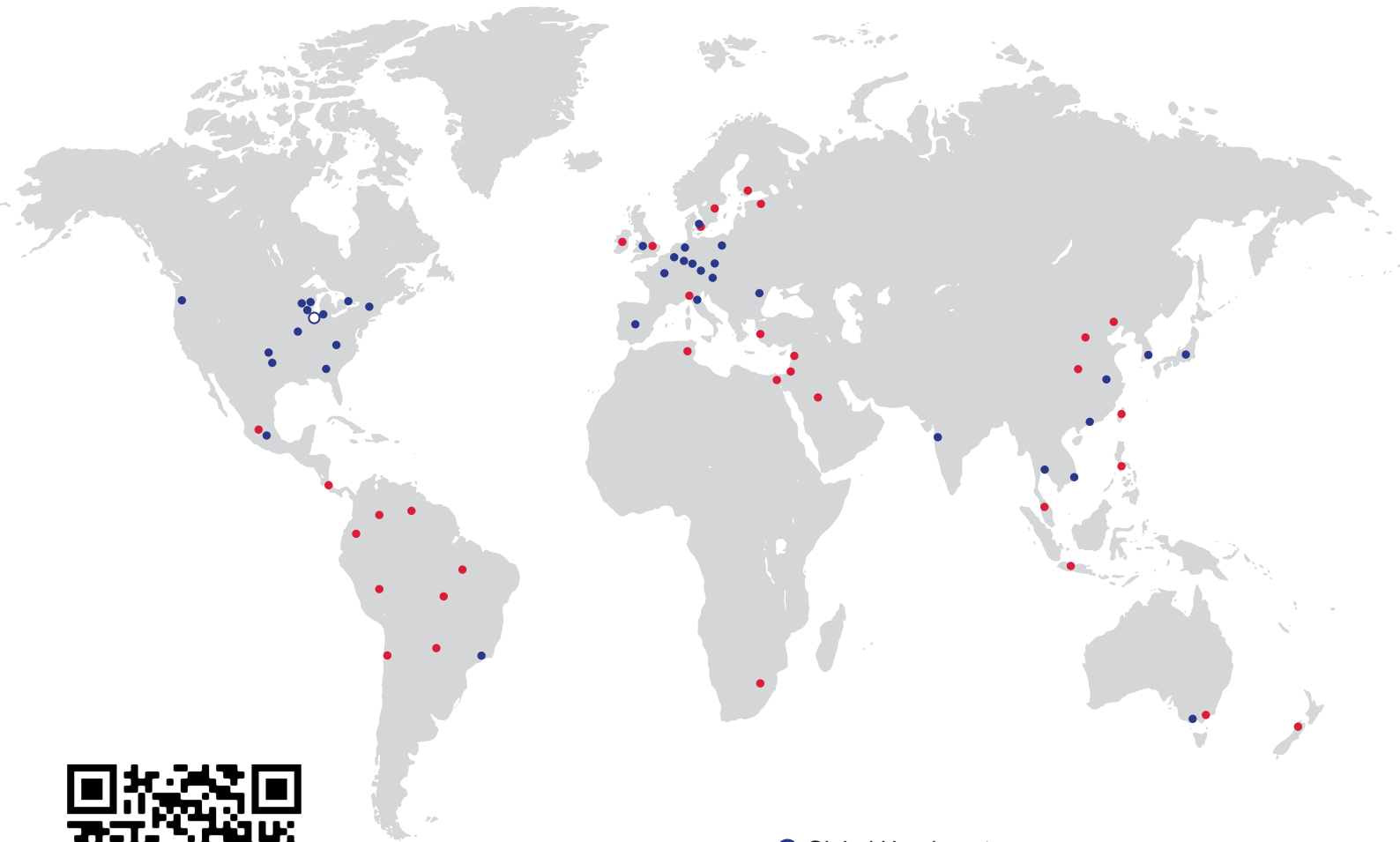


## LET OUR VISION BE YOUR VISION

# MAXCESS<sup>®</sup>

BETTER, FASTER, SMARTER

CONTACT US TODAY!



- Global Headquarters
- Manufacturing and Maxcess Representatives
- Sales and Service Agents

Global HQ & Americas

+1-844-MAXCESS

sales@maxcessintl.com

Maxcess Europe HQ  
Fife-Tidland GmbH

+49-6195-7002-0  
sales@maxcess.eu

Maxcess Germany  
RotoMetrics Deutschland GmbH

+49 6134 7262 - 0  
sales@rotometrics.de

Maxcess UK  
RotoMetrics Intl. Ltd.

+44 1922 6100 00  
uk.sales@maxcessintl.com

Web  
maxcess.com

Shop  
mymaxcess.eu  
myroto.com

