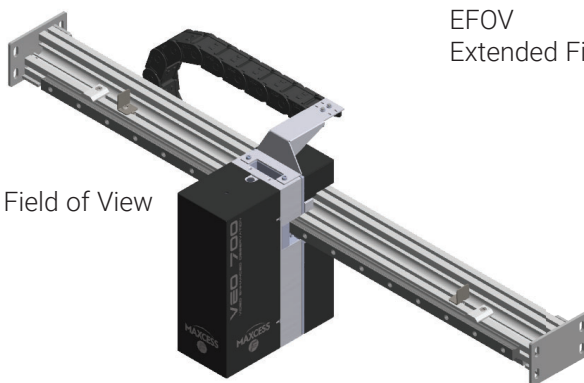


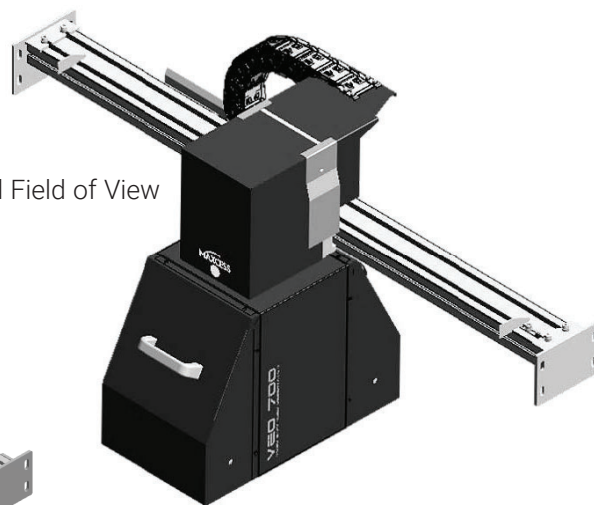


A MAXCESS BRAND

SFOV
Standard Field of View



EFOV
Extended Field of View



The Fife VEO 700 is our advanced, easy to install and use video-assisted moving-web monitoring inspection system.

The VEO 700 uses a camera system with LED strobe lighting, timed to your machine print cylinder, bull gear or printed mark to capture or “freeze” images of a moving web. This allows for the visual inspection of print quality, registration and other print processes by an operator at production speeds.

In addition, the VEO 700 features programmable positioning, job storage, zoom function, up to 10 images per second, and split screen with image freeze.

The VEO 700 joins the range of Fife web inspection systems.

General Specifications

Camera Models

SFOV (Standard field of view)
10 megapixel camera
10 X optical zoom

EFOV (Extended field of view)
12 megapixel camera
30 X optical zoom

Field of view

Maximum (Zoom out)
SFOV: 100 x 60 mm
EFOV: 220 x 120 mm

Minimum (Zoom in)
SFOV: 11 x 6.2 mm
EFOV: 15 x 8.4 mm

Enclosures

IP20

Ambient Temperature

0 to 40 °C

Power Supply

110 to 240 VAC (50 to 60 Hz)

System synchronisation

Image recording frequency:
10 images per second, max.

Strobe: LED

SFOV: one strobe, intergrated
EFOV: two strobes, external
(at the camera funnel)

Positioner

Dual mount max. length:
SFOV 3 m
EFOV 4 m
longer profiles on request

Positioning speed

Low: 50 mm/sec
High: 150 mm/sec

User Interface

Standard monitor with mouse and touchpad

Key Features

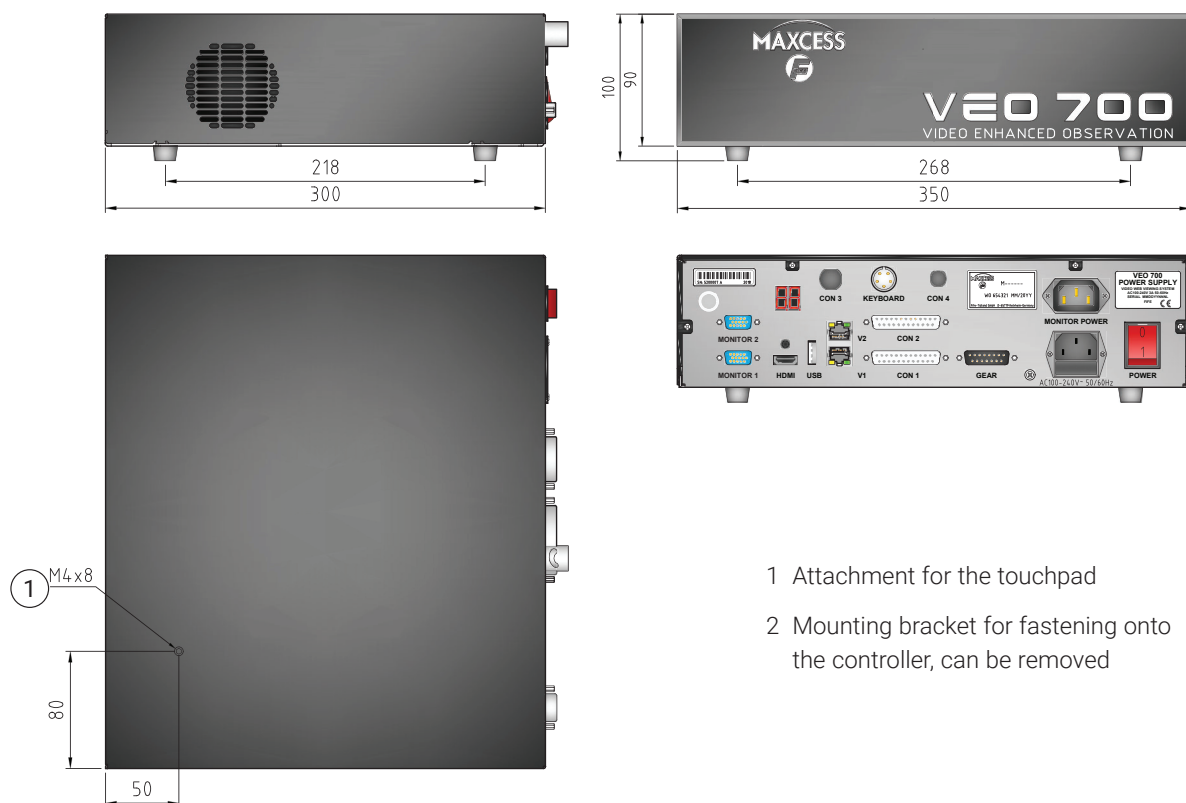
- Easy to operate
- Graphical user interface
- Split-screen, image freeze and rotation
- Synchronisation sensor (gear-tooth sensor, encoder, eye-mark sensor and external synchronisation inputs)
- Auto-scan with multiple scan patterns
- Programmable positioning
- Job management

OPTIONS

- Synchronized dual camera
- Additional monitor
- Touch screen monitor

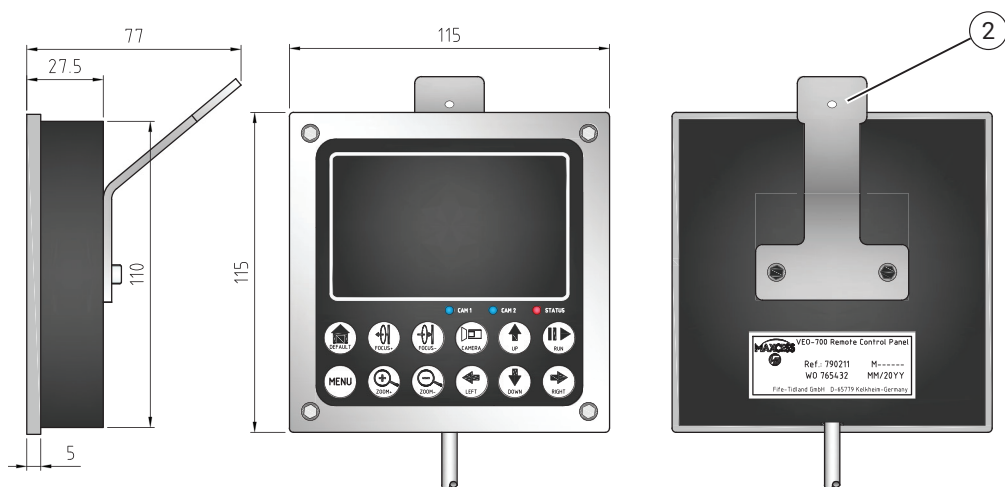
VEO 700 COMPONENTS AND DIMENSIONS

CONTROLLER

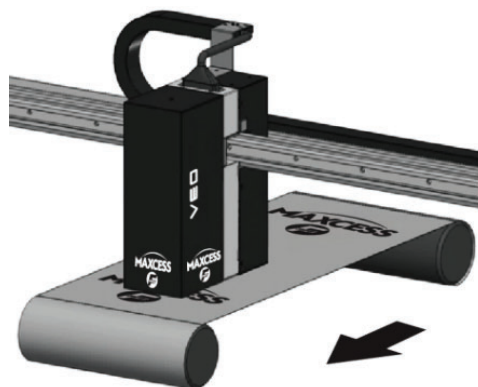


- 1 Attachment for the touchpad
- 2 Mounting bracket for fastening onto the controller, can be removed

TOUCHPAD



WEB TRAVEL AND IMAGE VIEW



Web travel

A - Standard:

Camera lens
0°



B - Option:

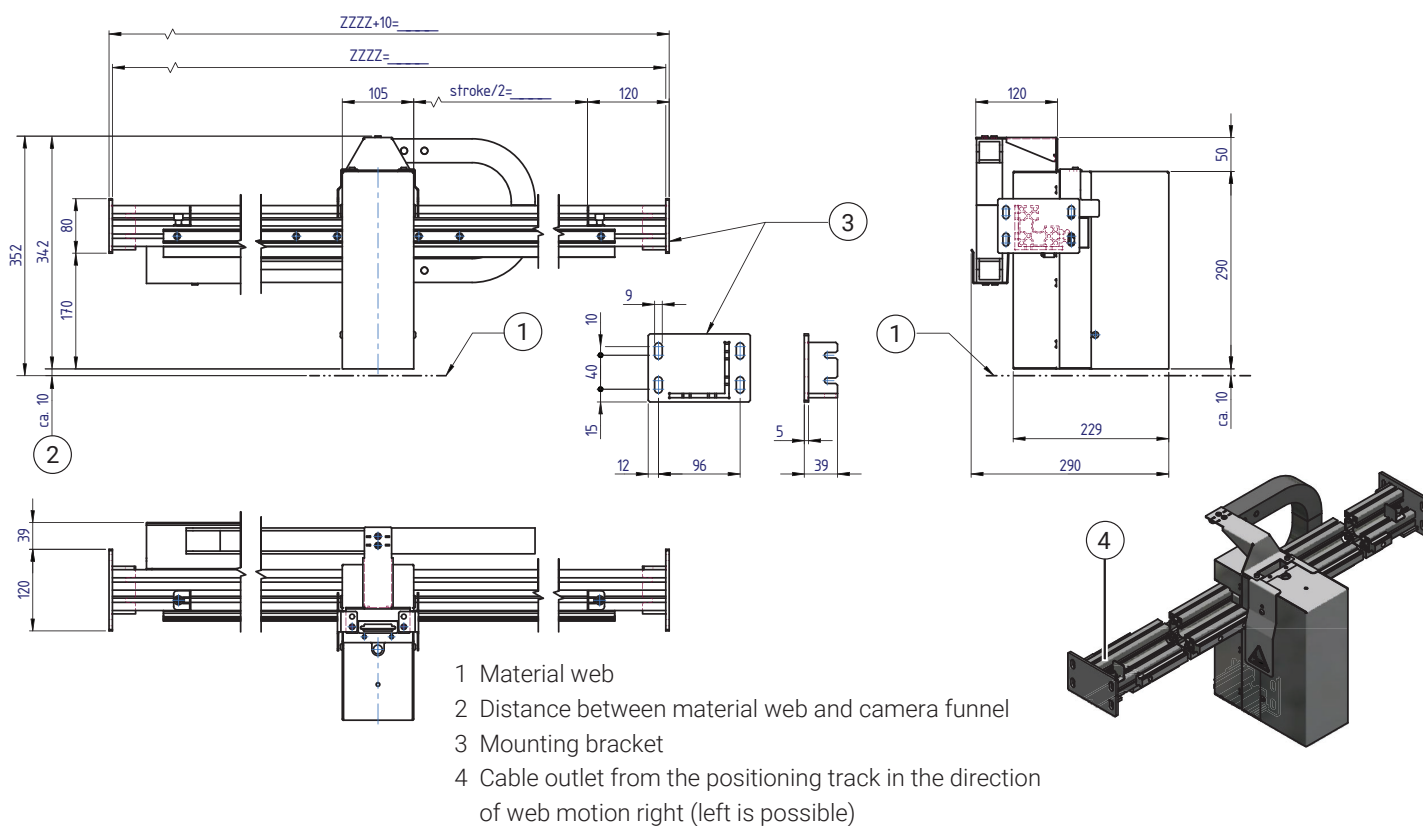
Camera lens
90° rotated



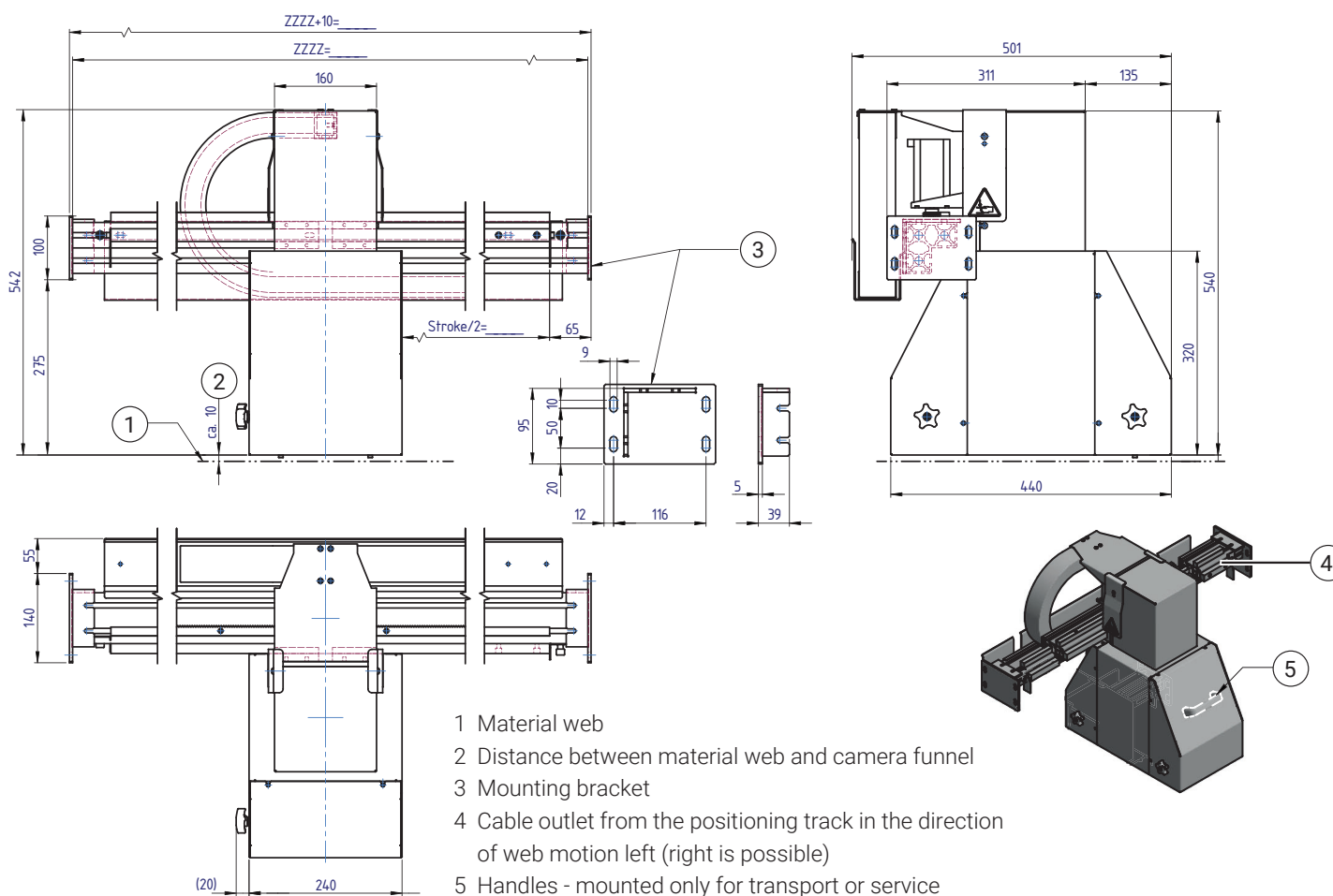
Image view

VEO 700 MODELS AND DIMENSIONS

VEO 700 SFOV: Basic system with standard field of view

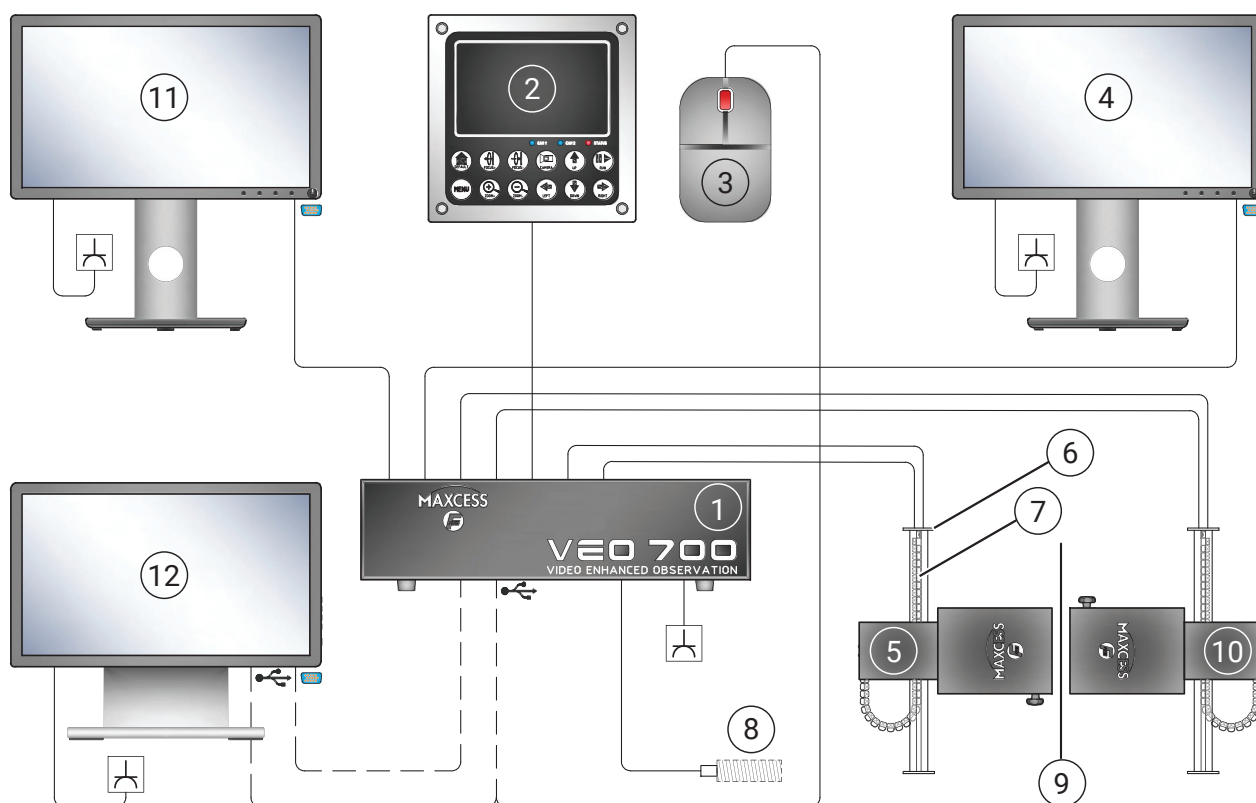


VEO 700 EFOV: System with expanded field of view



BLOCK DIAGRAMM

VEO 700 EFOV - with touchpad and mouse



- 1 Controller (power supply/signal interface)
- 2 Touchpad
- 3 Mouse
- 4 Monitor
- 5 VEO 700 Camera
- 6 Positioning track with mounting brackets
- 7 Gear rack and mechanical stops
- 8 Synchronisation sensor (gear-tooth sensor, encoder, eye-mark sensor and external synchronisation inputs)
- 9 Material web

Options:

- 10 Second camera
- 11 Additional monitor
- 12 Touchscreen

Notes:

Motorised positioning - includes stops for CE mechanical safety protection as well as cable chain on all sizes

Global HQ & Americas

+1-844-MAXCESS

sales@maxcessintl.com

Maxcess Europe HQ
Fife-Tidland GmbH

+49 6195 7002 - 0
sales@maxcess.eu

Maxcess Germany
RotoMetrics Deutschland GmbH

+49 6134 7262 - 0
sales@rotometrics.de

Maxcess UK
RotoMetrics Intl. Ltd.

+44 1922 6100 00
uk.sales@maxcessintl.com

[Web
maxcess.com](http://web.maxcess.com)

[Shop
mymaxcess.eu](http://shop.mymaxcess.eu)
myroto.com

