



WEBEX
ELECTRIC HTR

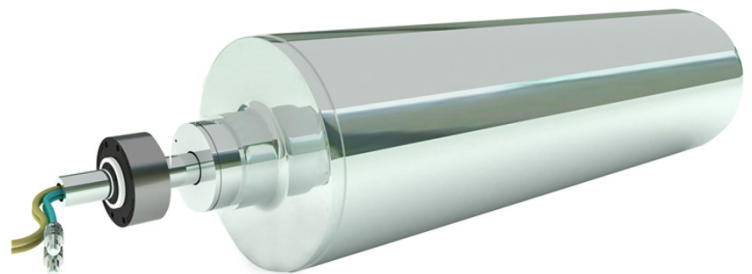
Heat transfer rolls from Webex that will give you the precise process control you need

WEBEX

A MAXCESS BRAND

End to End Solution for High Heat Profile Applications

Webex Electric HTR is an electrically heated roller for high temperature applications with a proven track record. Offering an even heat profile end-to-end, multiple heat zones for multiple web widths, and a fast ramp-up time, Webex Electric HTR rolls will give you the precise process control you need. Made in the USA with sourced components, Webex will deliver your Electric HTR heat transfer rolls faster than the competition.



Key Features



- Process temperatures of 800°F
- Fast ramp up to full temperature
- Multiple heating zones for even heat profile
- Intergrated zone temperature control with high alaram shut-off
- Intergrates with your controller, or ask us to supply
- Reduced maintenance and environmentally friendly
- Energy savings vs fluid heated rolls

INDUSTRY	APPLICATIONS
FILM	Micro embossing/microlensing
BATTERY	Laminating/insulating
SPECIALTY	Synthetic fibers, godet rolls, printed circuit boards
LAMINATING	Speciality tapes/carpet
NON-WOVEN	Diaper production, etc.

SPECIFICATIONS

ELECTRICAL COMPONENTS			
	QUANTITY	POWER	TYPE
Heaters	Varies based on size, minimum 3	240VAC 3 phase	Resistive
RTDS	6	120VAC	Resistive
Slip Ring	1	120/240 VAC	Copper Brushes
	Standard 200RPM, Silvered brushes available		
Controller	Customer or Maxcess Supplied		

ROLL CONSTRUCTION		
	MINIMUM	MAXIMUM
Diameters	6"	30"
Face Lengths	10"	120"
Materials	Carbon Steel	Stainless Steel
	Alloys	Copper
Coatings	Chrome	Tungstens
	Nickel	Ceramics
	Release coatings depending on temperature	
	Rubber covers depending on temperature	



GLOBAL HEADQUARTERS
& AMERICAS

P +1-844-MAXCESS
F +1-405-755-8425
sales@maxcessintl.com

EUROPE
& MIDDLE EAST

P +49-6195-7002-0
F +49-6195-7002-933
sales@maxcess.eu

ASIA
PACIFIC

P +86-400-830-1898
asia.sales@maxcess.com

maxcess.com



**RELATED PRODUCTS
ASK US ABOUT:**

Precision Roll Solutions from the brands of Webex, Valley Roller and Componex. We offer the most complete precision roll coverage in the industry



TIDLAND

MAGPOWER

WEBEX

