

See the Unseen. Control with Confidence.

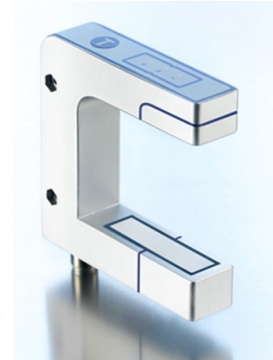
The SE-37A is an edge sensor that uses ultrasound, making it completely insensitive to ambient light. Its compact size makes it ideal for most web material applications. It measures the lateral offset of a moving web. The proportional band allows for high control accuracy. It is often used in pairs for centerline guiding.

The SE-37A can be used for both opaque and transparent materials. For acoustically permeable materials, a button on the housing allows calibration to ensure precision. An integrated LED display on the sensor shows the web position within the field of view.

Thanks to its IP65 rating, the SE-37A is suitable for environments exposed to spray or condensation.

SPECIFICATIONS

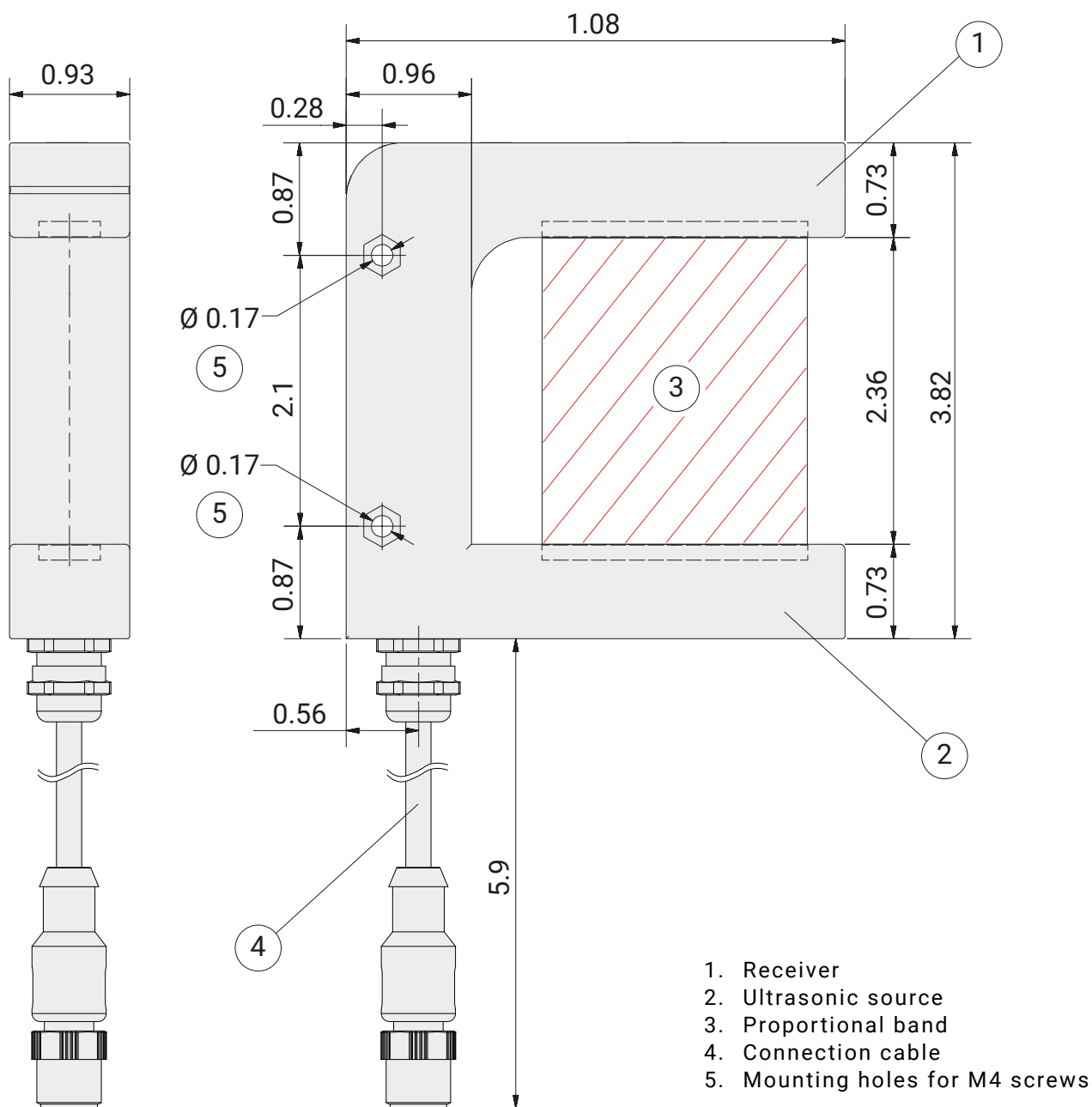
Proportional Band	Resolution
• 40 mm	• 0.01 mm
Source	Output Signal
• Ultrasonic, 310 kHz	• 0–10 mA, RL ≤ 100 Ω
Weight	
• 280 g	
Operating Temperature	Temperature Variation
• 41° to 140°F	• ±2.5% within 41° to 140°F
Supply Voltage	
• 12 V DC, 80 mA	
Linearity Deviation	
• ±1.1%	
Protection Class	
• IP65	



Key Features

- Insensitive to ambient light
- Insensitive to electrostatic discharge
- Temperature stabilized
- Protection class IP65 for use in harsh environments
- Low power consumption
- Light-sensitive materials are not affected
- Suitable for thin and clear films or foils
- Can be used in both new web guiding systems and retrofitting existing systems
- Quick and stable mounting thanks to a variety of mounting brackets and sensor positioners
- Compatible with Fife web guide processors such as D-MAXE and DP-20 Plus

DIMENSIONS



Dimensions in inches

GLOBAL HEADQUARTERS
& AMERICAS

P +1-844-MAXCESS

F +1-405-755-8425

sales@maxcessintl.com

EUROPE
& MIDDLE EAST

P +49-6195-7002-0

F +49-6195-7002-933

sales@maxcess.eu

ASIA
PACIFIC

P +86-400-830-1898

asia.sales@maxcessintl.com

RELATED PRODUCTS ASK US ABOUT:

Pair the SmartDrive Actuator with the Fife SE-37A sensor for an easy-to-deploy closed-loop guiding system.

maxcess.com



TIDLAND

MAGPOWR



WEBEX

